

# Chapman Centre Overview

The Chapman Centre is a medical office complex located at 2510, 2550 & 2564 NW Edenbower Boulevard in Roseburg OR. Excellence in workmanship combined with an extraordinary setting make the facility an ideal choice for any medical practice. The location offers great visibility from Edenbower Boulevard and is among new, high quality, medical and professional offices. The property is also conveniently located by Mercy Medical Center, the I5 corridor, and major retail centers in the most vital economic areas of Roseburg.



The facility consists of 37,708 square feet of medical offices. The architectural design of the buildings and high quality finishes compliment the generous 4.8 acre campus setting, of which 2 acres have been set aside to serve as a natural area. The property backs to a city park with lighted jogging path that gives your staff a great place for exercise or to have lunch. The campus setting includes abundant parking with 177 spaces, three buildings, each 1 level that offer the highest quality medical offices anywhere.

Ideal for private practices offering a modern facility, excellent location, flexibility, competitive lease options and on-site testing lab.

FOR  
LEASE

## Available Suites

Suite 126 – 1,898sf :: Base Rent = \$2,847.00/month NNN = \$474.50/month

This Space will be available April 1<sup>st</sup> 2018



[www.chapmaninvestments.com](http://www.chapmaninvestments.com)

- **Douglas Fast Net** offering broadband high speed over fiber with access to NoaNet (medical information network)
- **Conveniences** such as on-site labs, staff entrances, and ground level construction (no stairs anywhere) . Quick access to I-5 corridor and major commercial zones of Roseburg
- **Campus setting** with abundant Parking - 177 spaces, open spaces, park and jogging path
- **Excellent location** in the heart of the Roseburg Medical community; close to Mercy Medical Center

■ **Newer facility** with the highest quality materials and finishes

■ **Purposed design**, every aspect of the complex was designed with medical use in mind.

■ **Flexible and efficient** space plans that save you money



To find out more about leasing, call today at **(541) 784-6468** or **(360-609-1120)**

## Features

- Plans that meet your exact needs
- In the heart of the medical community
- Growing economic area
- On-site testing lab
- Competitive lease options
- Designed for Private Practice
- Modern high quality facility
- Easy access & great location
- Park setting with large open spaces
- Ground level - no steps - easy access
- Choose your finishes

[www.chapmaninvestments.com](http://www.chapmaninvestments.com)

## Tenants

- Chiropractic Spine Associates P.C. Dr. Finlayson Dc
- Excellence in Women's Healthcare, P.C. Dr. Linda A. Sewell
- Dr. Patrick Davol, M.D.
- Dr. Joe Black, M.D.
- NW Physical Therapy
- Community Living Case Management
- Bentley Financial Management

## Join the List

- Dr. Sorin Petre M.D.
- Quest Diagnostics
- Edward Jones
- Dr. Wilks DPM Podiatrists
- Eden Dental Dr. Lawson DMD
- Dr. Doru A Totoain, M.D.
- Two Rivers Integrative Medicine , Dr. Carrie Norris & Dr. Ryan Sweeney



- Secondary staff entrances in most suites
- 10 & 12ft drop ceilings
- 8 foot solid cherry wood doors



- Flexible and efficient space plan
- ADA Compliant
- Upgraded electrical for medical

To find out more about leasing, call today at **(541) 784-6468** or **(541-673-6407)**

## 2510 NW Edenbower Suite 126

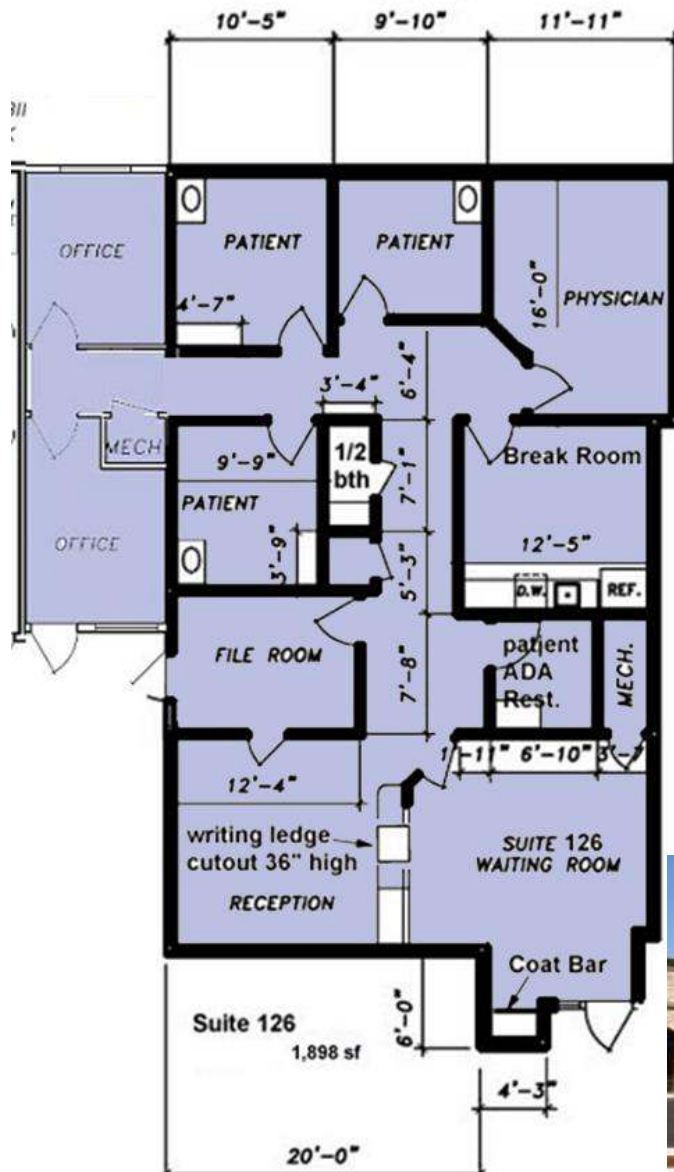
1,898 square feet

Base Rent  
\$2,847.00 / month

Estimated NNN  
\$474.50 / month

### Featuring

- Open design concept
- 2 large physician offices
- Staff Entrance
- Break Room / Nurses station
- 4 patient rooms



To find out more about leasing, call today at **(541) 784-6468** or **(360-609-1120)**